



GMT MONTHLY MEMBERSHIP PROGRESS REPORT

Results as of: 5/31/2018

Multiple District 14

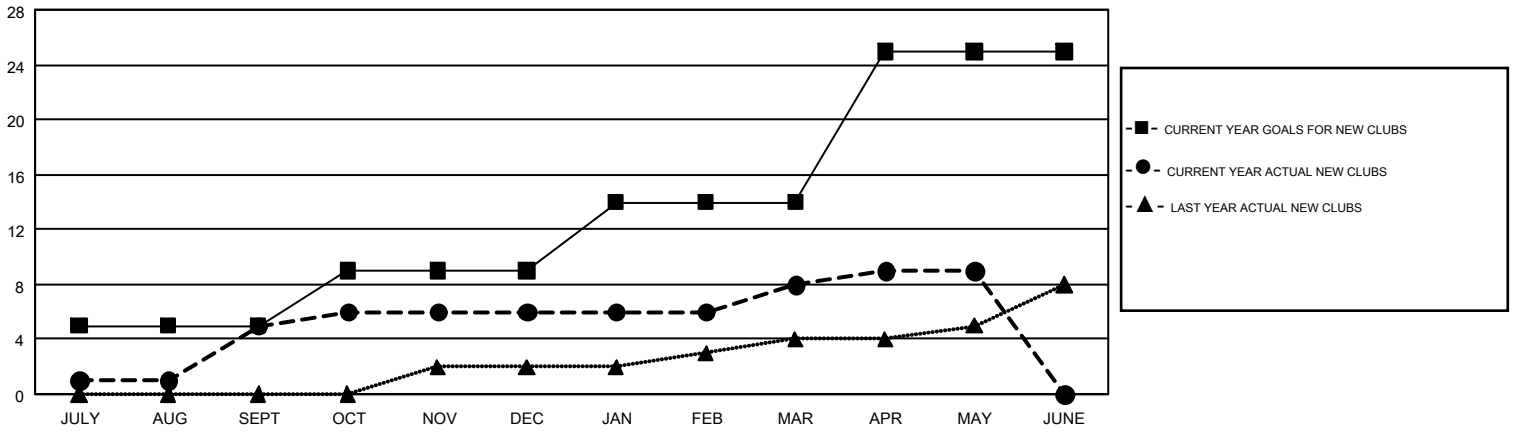
LOCATION: PENNSYLVANIA

GMT: CINDY GREGG

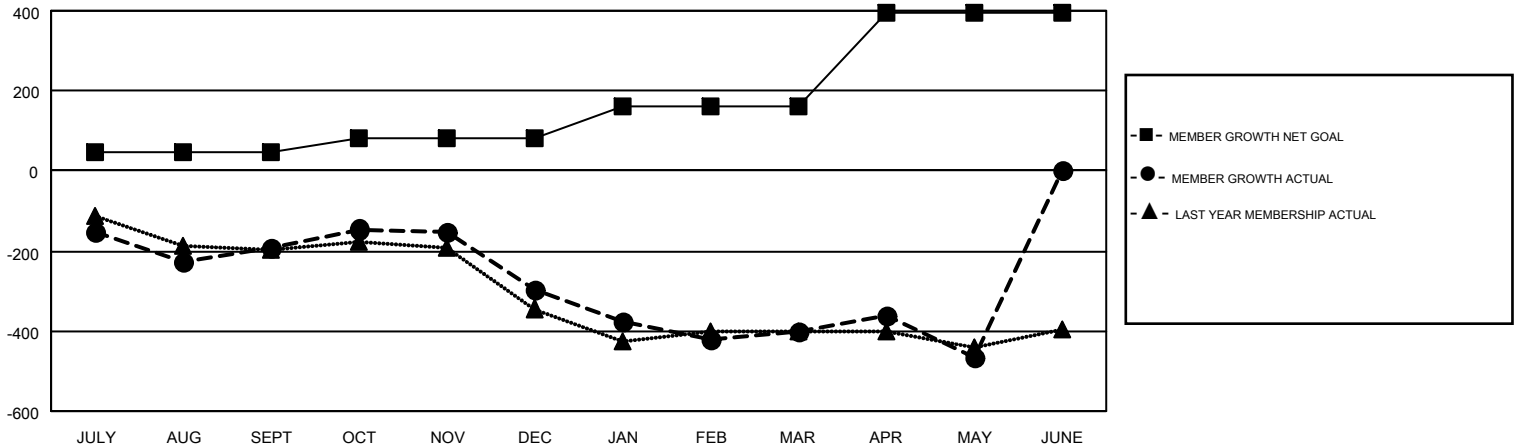
GMT CA 1

Clubs				Members			
RESULTS FOR 2017-2018				RESULTS FOR 2017-2018			
QUARTER	NEW CLUB GOAL	NEW CLUBS	DROPPED CLUBS	QUARTER	MEMBER GROWTH NET GOAL	MEMBER GROWTH ACTUAL	DROPPED MEMBERS ACTUAL (including transfers)
JULY/AUG/SEPT	5	5	3	JULY/AUG/SEPT	46	455	589
OCT/NOV/DEC	4	1	3	OCT/NOV/DEC	35	454	536
JAN/FEB/MAR	5	2	3	JAN/FEB/MAR	78	440	508
APR/MAY/JUNE	11	1	1	APR/MAY/JUNE	237	268	301

GOALS AND ACTUAL NEW CLUBS CUMULATIVE



GOALS AND ACTUAL MEMBERS CUMULATIVE



DROPPED CLUBS: 10	388 CLUBS OF 702 ADDED 1 OR MORE NEW MEMBERS	GENDER DISTRIBUTION
DROPPED MEMBERS		MALE 14,009 (74.20%)
DECEASED 359		FEMALE 4,872 (25.80%)
CLUB CANCELLED 41	CLICK HERE FOR CUMULATIVE MEMBERSHIP DATA	TOTAL FAMILY UNIT MEMBERS 3,492
OTHER 1,534		FAMILY MEMBERS PAYING HALF DUES 1,802
TOTAL 1,934		